



# 2024 CAMP REGISTRATION GUIDE

## Step 1: Select Camp

**Junior Camp**  
Ages 4-5  
Code: 19001

**Intermediate Camp**  
Ages 6-7  
Code: 19002

**Senior Camp**  
Ages 8-9  
Code: 19003

**Squad Camp**  
Ages 10-14  
Code: 19004

## Step 2: Themes, Special Events & Select Add-Ons

Week \$40/Day \$160/Week	Weekly Theme	Special Guest Wednesday	Field Trip \$35.00	Swimming Lessons \$60.00/45 mins	Piano Lesson Mon & Wed \$45.75	Piano Lesson Tues & Fri \$45.75	Domino's Lunch Wednesday \$10.00	A & W Lunch Friday \$10.00
Week 1 Jul 1-5	To Infinity & Beyond!	Kingsville Essex Associated Band	Miracle Park & Centennial Pool	19290	19047	19048	19018	19019
Week 2 Jul 8-12	Outdoor Explorers	Boarder City Barkers	Greenview Aviaries	19291	19049	19050	19031	19032
Week 3 Jul 15-19	Camp Olympics	Inflatable Waterslide	Zap Zone & Alpha Gymnastics	19292	19051	19053	19033	19034
Week 4 Jul 22-26	Disney	Kona Ice	On the Water & Imagine Cinemas	19293	19052	19056	19035	19036
Week 5 Jul 29-Aug 2	Camp Extreme	Cheerleaders	Big Time Entertainment/Slides	19294	19280	19281	19037	19038
Week 6 Aug 5-9	Decades	Windsor Symphony	John R Homestead	19295	19282	19283	19039	19040
Week 7 Aug 12-16	Get Messy	Inflatable Waterslide	Adventure Bay/ Cannon Cove	19296	19284	19285	19041	19042
Week 8 Aug 19-23	Happy Holidays	Emerald Isle Dance	Ojibway Park/Revs Bowling	19297	19286	19287	19043	19044
Week 9 Aug 26-31	Spirit Week	Community Helpers	Seacliff Park & Jack Miner	19298	19288	19289	19045	19046

## Important Information for Campers - Clubhouse Day Camp 2024

### Field Trips

Day Camp field trips are an optional add-on to camp for \$35, and the location is subject to change based on weather conditions, number of campers, and availability at the site. Field trip location will also be determined by camper age. Campers who do not participate in the field trip will have their regular daily activities to keep them busy! Registration closes the Friday before each field trip, so please register in advance. Only a limited number of campers will be permitted to attend the field trips. Campers must arrive by 9:00a to attend the field trip. If campers are not on site by 9:00a they must find alternate transportation to the trip or remain on site. No refunds will be provided.

### Hot Lunches

Hot lunches are available for purchase at an additional cost. You will be prompted to select your child's meal preference. Please sign up for the hot lunch that coordinates to your child's weekly day camp registration. Registration will close on the Monday at 12:00 pm for Wednesday lunches and the Wednesday at 12:00p for Friday lunches. If your child is absent the day of their hot lunch order you may pick up their lunch until 4:00p that day.



We are proud to be a HIGH FIVE® accredited organization which demonstrates our commitment to ensuring the highest levels of quality in all of our recreational programs.

### Piano Lessons

Piano lessons are offered Monday, and Wednesday or Tuesday, and Friday for 30 minutes each day during camp hours. Please sign up for the piano lesson that coordinates to your child's weekly day camp registration. Registration will close on the Thursday at 4:30pm of the week before lessons begin. Campers must arrive at camp by 9:45a for their lesson.

### Special Guests

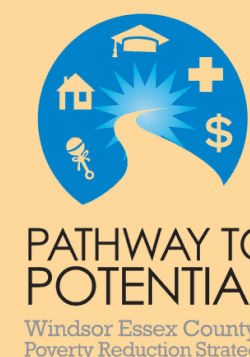
Every Wednesday will feature a special guest! Guests range from interactive activities to performances. All campers will have the opportunity to engage in the weekly special guest. Schedules may vary or change.

### Swim Lessons

Swim lessons are offered Monday, Tuesday, Wednesday, and Friday for 45 minutes during camp hours. Staff will ensure your child is changed and ready to swim with our qualified swimming instructors at the designated time. Swimmers will progress at their own pace and may require multiple sessions to complete a swim level. Swim lessons are only available for levels Preschool through Swimmer 6. If your child requires advanced swim instruction please let us know! Registration will close on the Thursday the week before lessons begin. Campers must arrive by 9:00a or they will not be eligible to participate in their lesson.

### Weekly Themes and Schedule

Camp activities will focus on weekly themes where children will enjoy participating in games, arts and crafts, fitness challenges, and daily swimming. Camp runs from 9:00am until 4:00pm with early drop off beginning at 7:30a and late pick up until 6:00p. Campers who arrive after 9:00a or leave before 4:00p may need to wait until their group is back on site to be released or dropped off. Daily and weekly registrations are permitted. Weekly registrations receive a 1 day (\$40) discount.



### Financial Assistance Available

The Town of Essex is committed to ensuring everyone can play by making financial assistance available. If you are in need of assistance, please contact us so we can guide you through the process.

### NEW!! Squad Camp | Ages 10-14

This year, our oldest campers will have a blast engaging in a variety of opportunities tailored just for them! Squad Camp will be held at the Maedel Community Centre. Campers take part in skill-building activities such as first aid, babysitting, bike safety, cooking and more. Plus, campers will explore spots around town including the splash pad, Sadler's Park and the fire station while swimming at the Essex Recreation Complex every Wednesday through Friday. While campers will have exclusive opportunities designed for their age group, they will still be able to join weekly field trips and enjoy special guests on Wednesdays with the younger camps.